

**Project:** Wodjil Workout – Rise of the pH (TEK00002)

**BIO:** Tyrone Henning – Director/Agronomist - Tek Ag. [ty@tekag.com](mailto:ty@tekag.com); 0429843025; Hawkins Rd Badgerin Rock WA 6475. Providing agronomic and technical services in broadacre precision agriculture, for the north eastern central wheatbelt of WA.

### Progres:

- Trial seeded to Carrolup Oats on the 19<sup>th</sup> of April 2016
- Nth Koorda cropping group walked through the trial and discussed visual differences.
- Soil testing has been conducted
  - See following pages for results
  - The trial will be re-tested after harvest 2017.
- Due to having a good crop, aerial NDVI was taken – see attachment.
- Yield and quality taken – see graphs.
- Finally, a good year for rainfall and yield results however, has shown up site variation (See Biomass image)

### Messages

- Lack of controlled traffic has lead to recompaction issues
- Site variation has given some control plots better results than treatments
- pH is changing, both on surface and to incorporation depth (see midsoil results)
- Economic effects of incorporation methods not clear at this stage due to site variation and compaction.
- Expensive incorporation techniques are cost prohibitive and not economic in the Eastern Wheatbelt of W.A.
- Statistics need to be run on data collected.

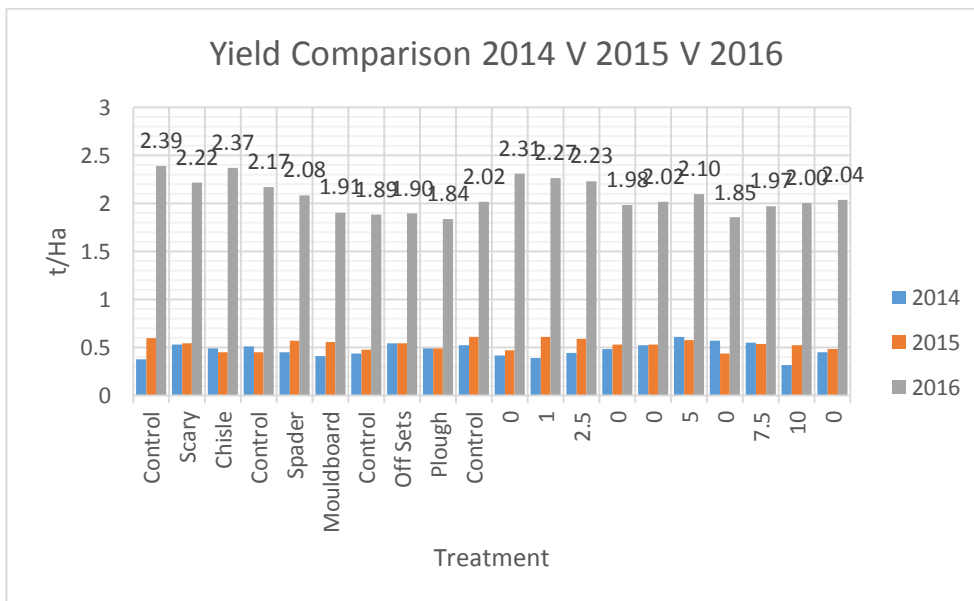
### 2017

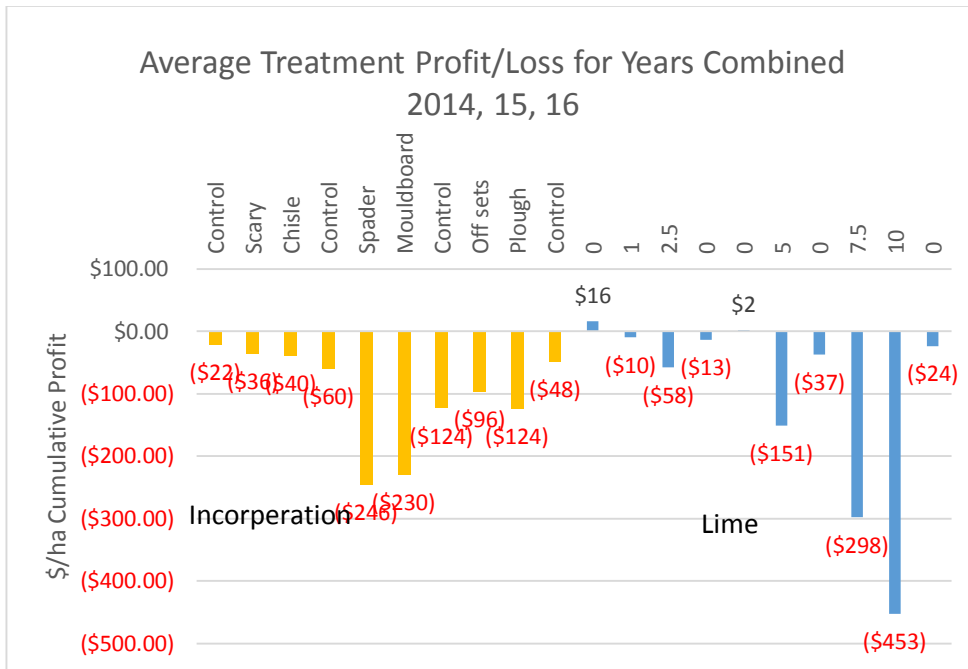
- Include a Gypsum/Lime treatment in spare treatment.
- Deep rip setup area to the west of the trial with inclusion plates
- Trial is compacted, deep rip?
- Sow to Canola for maximum treatment response.
- Take NDVI
- Yield and Quality
- Re test soil pH
- Final report due

### Trial Management

- Trial seeded to Carrolup oats on the 19<sup>th</sup> April 2016
- 38kg MAP and 40kg urea (banded) at sowing
- Summer Spray 2<sup>nd</sup> of March
  - 1.2l/ha Glyphosate 450
  - 100ml/ha Garlon
  - 1% AMS and 0.5% Hotup

- Knockdown and pre-emergent of :
  - 1.1l/ha Metalochlor 720
  - 500g/ha Diuron
  - 110ml/ha Alpha- Cyper and Clorpyriphos
  - 1l/ha Glyphosate 450
  - 100ml/ha Oxyflurofen
  - 1% AMS, 02.% BS1000
  
- Post emergent applied at – 2<sup>nd</sup> of June 2016
  - 1.25l/ha Precept
  - 180ml/ha Dicamba 500
  - 60g/ha Lontrel
  - 0.5% Uptake
  
- Topdress urea/potash on – 9<sup>th</sup> of June 2016
  - 45kg/ha Urea
  - 45kg/ha Muriate of Potash





pH Midsoil – 10-20cm  
(April 2016, 3 years after application/incorporation)

